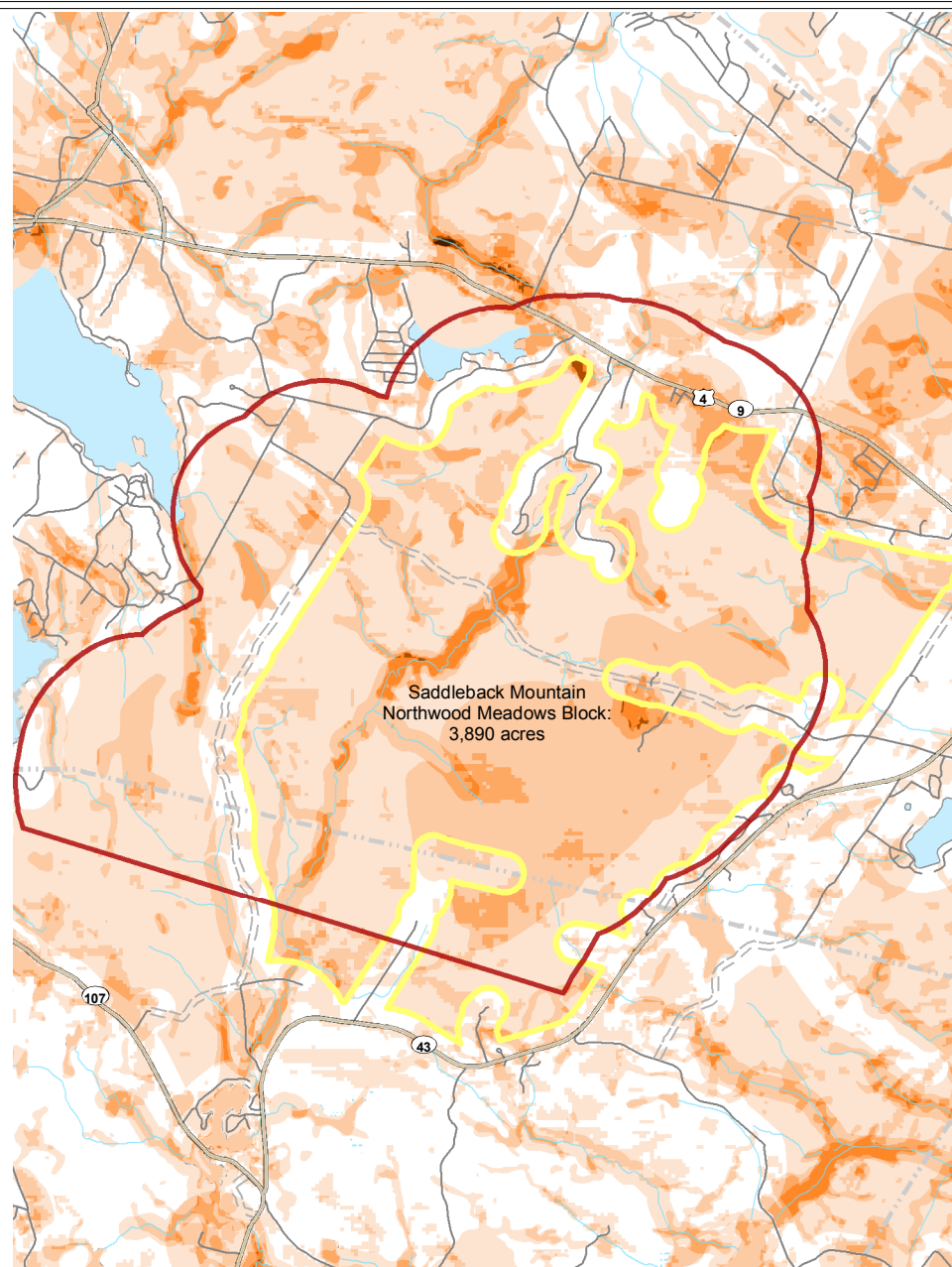


**NH Fish & Game Wildlife Action Plan**

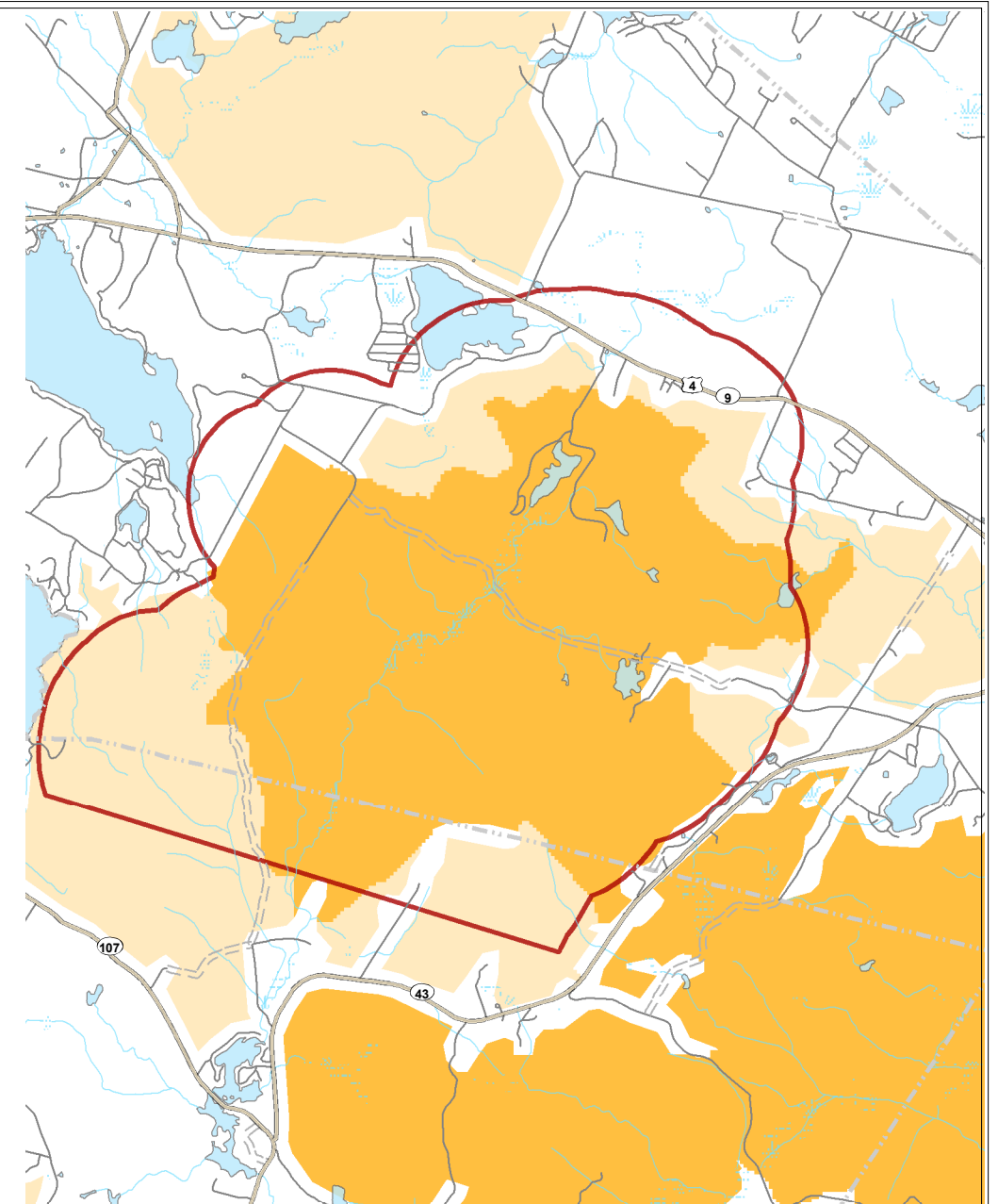
**Habitat Tiers**

- Highest Ranked Habitat in NH (tier 1)
- Highest Ranked Habitat in Biological Region (tier 2)
- Supporting Landscapes (tier 3)
- Habitat not top ranked



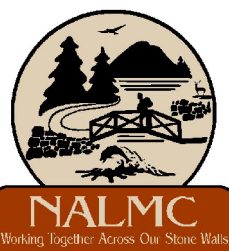
**Bear-Paw Regional Greenways Conservation Plan**

- |  |  |
|--|--|
| <b>Co-occurrence</b>   | <b>Unfragmented Block</b>  |
| <span style="display: inline-block; width: 15px; height: 10px; background-color: lightorange; border: 1px solid black; margin-right: 5px;"></span> 1 | <span style="display: inline-block; width: 15px; height: 10px; background-color: orange; border: 1px solid black; margin-right: 5px;"></span> 4                          |
| <span style="display: inline-block; width: 15px; height: 10px; background-color: orange; border: 1px solid black; margin-right: 5px;"></span> 2      | <span style="display: inline-block; width: 15px; height: 10px; background-color: brown; border: 1px solid black; margin-right: 5px;"></span> 5                           |
| <span style="display: inline-block; width: 15px; height: 10px; background-color: orange; border: 1px solid black; margin-right: 5px;"></span> 3      | <span style="display: inline-block; width: 15px; height: 10px; background-color: darkbrown; border: 1px solid black; margin-right: 5px;"></span> 6 - 7                   |
|  | <span style="display: inline-block; width: 15px; height: 10px; background-color: yellow; border: 2px solid yellow; margin-right: 5px;"></span> Saddleback Mountain Block |

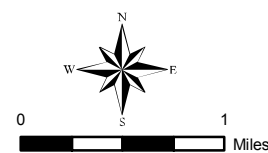


**Land Conservation Plan for Coastal Watersheds  
Saddleback Mountain Conservation Focus Area**

- Core Area
- Supporting Natural Landscape



**Map 4 -- Ecological Assessment  
State and Regional Plans**



**Legend for all Maps**

- Ecological Assessment Focus Area
- State Roads
- Road
- Class VI Road
- Town Boundary
- Streams
- Swamp/Marsh
- Lake or Pond

Each of these maps represents data developed for specific projects by the following organizations: the NH Fish & Game Wildlife Action Plan, by NH F&G, 2007; Bear-Paw Regional Greenways Natural Resources Inventory, by Bear-Paw and SPNHF, 2003; and the Land Conservation Plan for NH's Coastal Watersheds, by The Nature Conservancy, et al., 2006. The following data layers were mapped at 1:24,000 and distributed by NH GRANIT: watershed boundaries, from NRCS and NH DES; hydrography, from the US Geological Survey, and town boundaries, from the USGS.

This map is provided for informational use only. Neatline Associates LLC makes no claims, no representations, and no warranties, express or implied, concerning the validity of these data and data products, including the implied validity of any uses of such data.

Ecological assessment by Ibis Wildlife Consulting  
Map prepared by Neatline Associates August 2009

